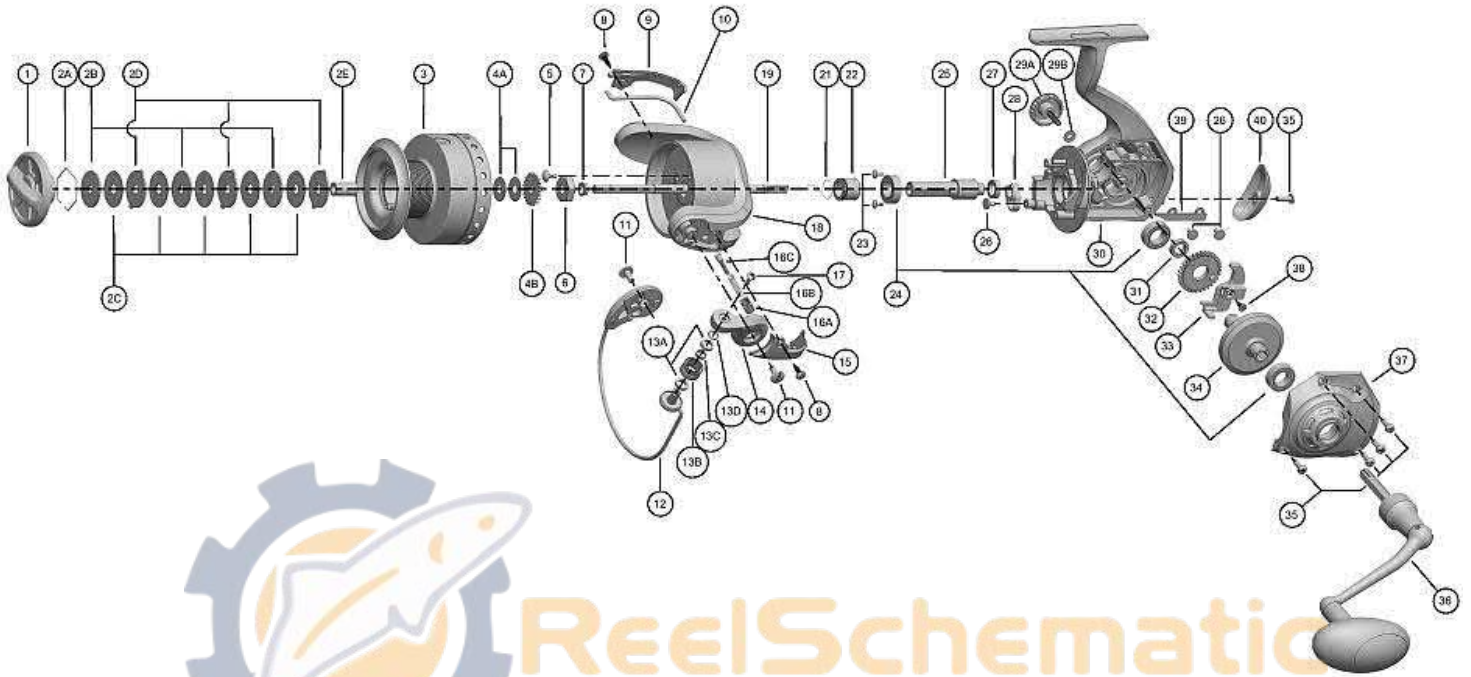


QUANTUM

Optix OP80FA



ReelSchematic

Quantum OP80FA Spinning Reel Part List					
Key #	Description	Part No.	Key #	Description	Part No.
1	Drag Knob Assembly	TP332-06	17	Line Roller Screw	TP108-02
2	Drag Washer Kit includes:	TP4080-01	18	Rotor Assembly	UP009-06
	2A - Drag Washer Retainer	N/A	19	Main Shaft	TP015-02
	2B - Drag Washer 'D'	N/A	21	A.R. Actuator Spring	TP086-02
	2C - Drag Friction Washer	N/A	22	A.R. Sleeve	TP139-01
	2D - Keyed Drag Washer	N/A	23	Pinion Bearing Screw	TP079-01
	2E - Spool Bushing	N/A	24	Ball Bearing, 9 ID x 17 OD x 5 W	TP157-01
3	Spool Assembly	UP321-54	25	Pinion	TP011-01
4	Click Gear Kit	TP4037-01	26	A.R. Stopper Screw	TP078-01
	4A - Center Shaft Washer	N/A	27	Ball Bearing, 7 ID x 11 OD x 3 W	TP027-01
	4B - Click Gear	N/A	28	A.R. Stopper	TP060-01
5	Rotor Nut Lock Screw	TP094-01	29	Handle Cap Screw Assembly	TP4073-04
6	Rotor Nut	TP006-01		29A - Handle Cap Screw	N/A
7	Main Shaft Bushing	TP214-01		29B - Handle Cap Screw Washer	N/A
8	Rotor Cover Screw	TP077-03	30	Body Assembly	UP001-56
9	Bail Holder Cover	UP088-06	31	Bushing, 7 ID x 11 OD x 3 W	TP141-01
10	Kick Lever	TP019-02	32	O/S Gear	TP053-01
11	Pivot Screw	TP044-02	33	O/S Slider	TP025-01
12	Bail Assembly	UP347-06	34	Drive Gear	TP012-01
13	Line Roller Kit includes:	TP4202-02	35	Side Cover Screw	TP057-01
	13A - Line Roller Bushing	N/A	36	Handle Assembly	UP318-03
	13B - Line Roller	N/A	37	Side Cover Assembly	UP023-56
14	Arm Lever	TP007-06	38	Main Shaft Screw	TP100-01
15	Arm Lever Cover	UP087-06	39	O/S Slider Plate	TP026-01
16	Bail Spring Kit	TP4022-02	40	Body Rear Cover	UP140-04
	16A - Bail Spring Holder	N/A			
	16B - Bail Spring	N/A			
	16C - Bail Spring Pin	N/A			